

## nursery & toys



## toys

|                    |        |
|--------------------|--------|
| DOLL'S DOLLS-HOUSE | £55    |
| BICYCLE RED,YELLOW | £11.50 |
| DOLL'S DOLL        | £7     |
| AEROPLANE          | £8.50  |
| BEAR               | £8.50  |
| DOG                | £7     |



## memories

|               |        |
|---------------|--------|
| GIRL DOLL     | £      |
| MEMORY CHEST  | £65    |
| RAGGETTY ANNE | £24.50 |
| CHAIR         | £29.85 |

# bedrooms



FRENCH STYLE HAND-PAINTED BEDROOM SUITE - 6 PIECE

£465

hand-painted

## versailles



HAT  
VARIOUS STYLES

£24.50



## belmont bleu



BELMONT BLEU BEDROOM SUITE - 6 PIECE

£388.75

# home



BROCADE CHAISE  
CONSOLE TABLE

£49  
£37.75

TABLE LAMP HAND PAINTED  
PERFUME TRAY

£70 SEVERAL STYLES  
£14



- MAIDS CHAIR £15.50
- RAGGETTY ANDY £24.50
- EASTER BASKET £20.25
- EGGS £2.50
- MUSHROOMS £3.95
- DUSTPAN/BRUSH £14.50
- BEDDING/NAPPIES £1.95 TO 3.95
- MAIDS WORK BOX £18.50



WICKER SETTEE £56

# chinoise



CHINOISE DESK  
CHAIR

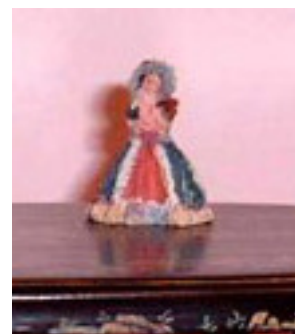
£42.50  
£32.50

DOCTORS BAG  
GINGER JAR

£32  
£9.50



LADY £  
DINING SET £158  
WITH 4 CHAIRS  
  
CACHE POT £31.95  
FIGERINE £11.50  
HAT & PARASOL £27.50



# furniture

BELTERS HAND-PAINTED SUITE  
£388.05 - 6 PIECES  
SECOND CHAIR AND END TABLE ARE NOT SHOWN

|               |       |
|---------------|-------|
| LADY          | £     |
| CAT           | £36   |
| DOG           | £38   |
| BOWL of FRUIT | £7.50 |

ask for details  
on  
1/24 scale  
items

# elegance



NEWCASTLE BAR - 4 PIECES £190.60

|                |          |
|----------------|----------|
| CORNER CABINET | £52.50   |
| CHAIR          | £24.75   |
| MEMORY BOX     | SOLD OUT |
| SLIPPERS       | SOLD OUT |
| BOWL of FRUIT  | £7.50    |

## furniture 2



POLK SILVER CHEST £49.50

GALLERY DISPLAY CABINET £49.50



LOCUST HILL SUITE - BLUE £150

# furniture 3



HAMILTON VITRINE

£54.45

DUTCH BABY HOUSE

£70.75



WISTERIA SOFA AND CHAIR - GOLD

£129.75

END TABLE

£37



LIMITED EDITION LADY'S CABINET

£67 INTERNALLY FITTED

# dining

SIDEBOARD £55  
DINING SET £168.50  
TABLE WITH 2 CHAIRS & 2 CARVERS

CHERUB/DISH £30  
URN - LARGE £22.50



DINING SET £159  
TABLE & 4 CHAIRS

TEA SET £57.50  
15 PIECES

LADY £120





# occasionals



CHAIR - PART OF THREE PIECE SUITE £122.50 TWO CHAIRS & SETEE

MECHANICAL TABLE £42.50

LADY £165

VASE £20

DOG £33

## occasionals 2



|                        |        |
|------------------------|--------|
| WICKER DESK            | £80    |
| WICKER CHAIR           | £28    |
| ETAGERE SHELF UNIT     | £32.50 |
| RIVERTON CONSOLE TABLE | £37.75 |
| TEA POTS               | SOLD   |
| SQUARE TABLE           | £26.50 |
| COTTAGE LAMP           | £28    |
| ROUND TABLE            | £37    |
| FIGURINE               | £12.50 |
| OVAL TABLE             | £39.15 |
| BOWL                   | £7.25  |



|                      |      |
|----------------------|------|
| WICKER PUB SET       | £126 |
| MILK & CAKES ON TRAY | £15  |
| LADIES TRAVEL BAG    | £3   |



CARVED LION POOL TABLE £95.55 TO ORDER

wicker is  
also available  
in  
1/24 scale



DOLLS DOLL £39.95

# occasionals 3



Bespaq

|                  |             |
|------------------|-------------|
| BALLYWAYNE DESK  | £60.50      |
| BALLYWAYNE CHAIR | £43.50      |
| DESK LAMP        | £30.85 PAIR |
| CAT              | £36         |

|                     |        |
|---------------------|--------|
| TWAIN PARTNERS DESK | £48    |
| TWAIN CHAIR         | £30.35 |
| TWAIN BOOKCASE      | £48.25 |



# hand-painted



MANAQUIN £  
FIRE SCREEN £  
FIGERINE £

THE CHAIR & CABINET ARE  
PART OF A BESPAG SET.



HANDBAG £  
LADIES SHOES £

THE CHAIR, DRESSING  
TABLE & STOOL ARE PART  
OF A BESPAG SET.

# country



|               |                          |
|---------------|--------------------------|
| DRESSER       | £58.50                   |
| DINING SET    | £151.50 TABLE & 4 CHAIRS |
| HAMPER        | £25                      |
| BASKET OF VEG | £19.50                   |
| VEG BOARD     | £19.50                   |
| HAM & EGG PIE | £5.50 ON TRAY            |

|                     |        |
|---------------------|--------|
| WICKER WHEELBARROW  | £42    |
| BIRD HOUSE          | £22    |
| CORNER FENCE/PLANTS | £14    |
| POTTED PLANT        | £12.50 |
| GARDENING BOX       | £7     |
| BASKET              | £5.95  |
| WATERING CAN        | £6.50  |



## accessories



|               |          |
|---------------|----------|
| WICKER CHAISE | £49      |
| DOLLS DOLL    | £7.50    |
| WOOL BASKET   | £55      |
| JUG           | £7       |
| BASKET of VEG | £15      |
| MANNEQUIN     | £25      |
| MEMORY BOX    | SOLD OUT |
| DOG           | £45      |

wallpaper  
fabric  
lace and ribbons  
millinery  
mirrors  
paintings



|                  |        |
|------------------|--------|
| WORK ROOM - BLUE | £118   |
| WORK ROOM - PINK | £95.50 |

## wicker



accessories  
smaller scales  
leather items  
etc